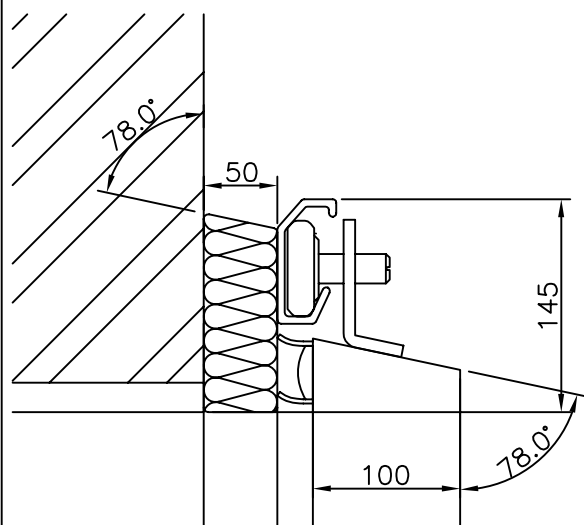
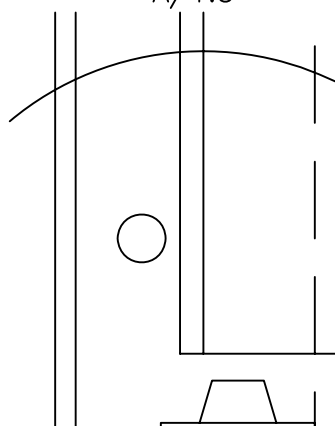


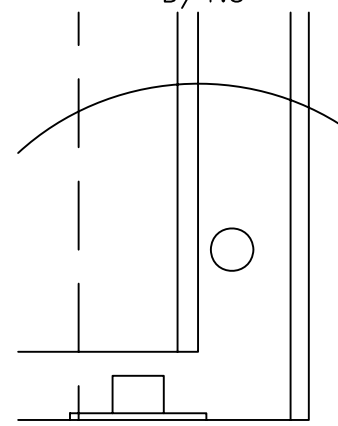
B/1:5



A/1:5



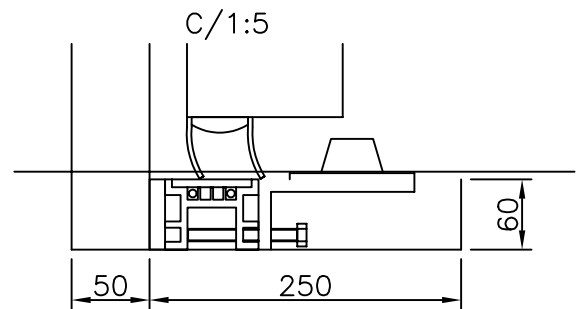
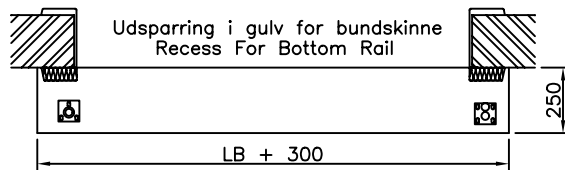
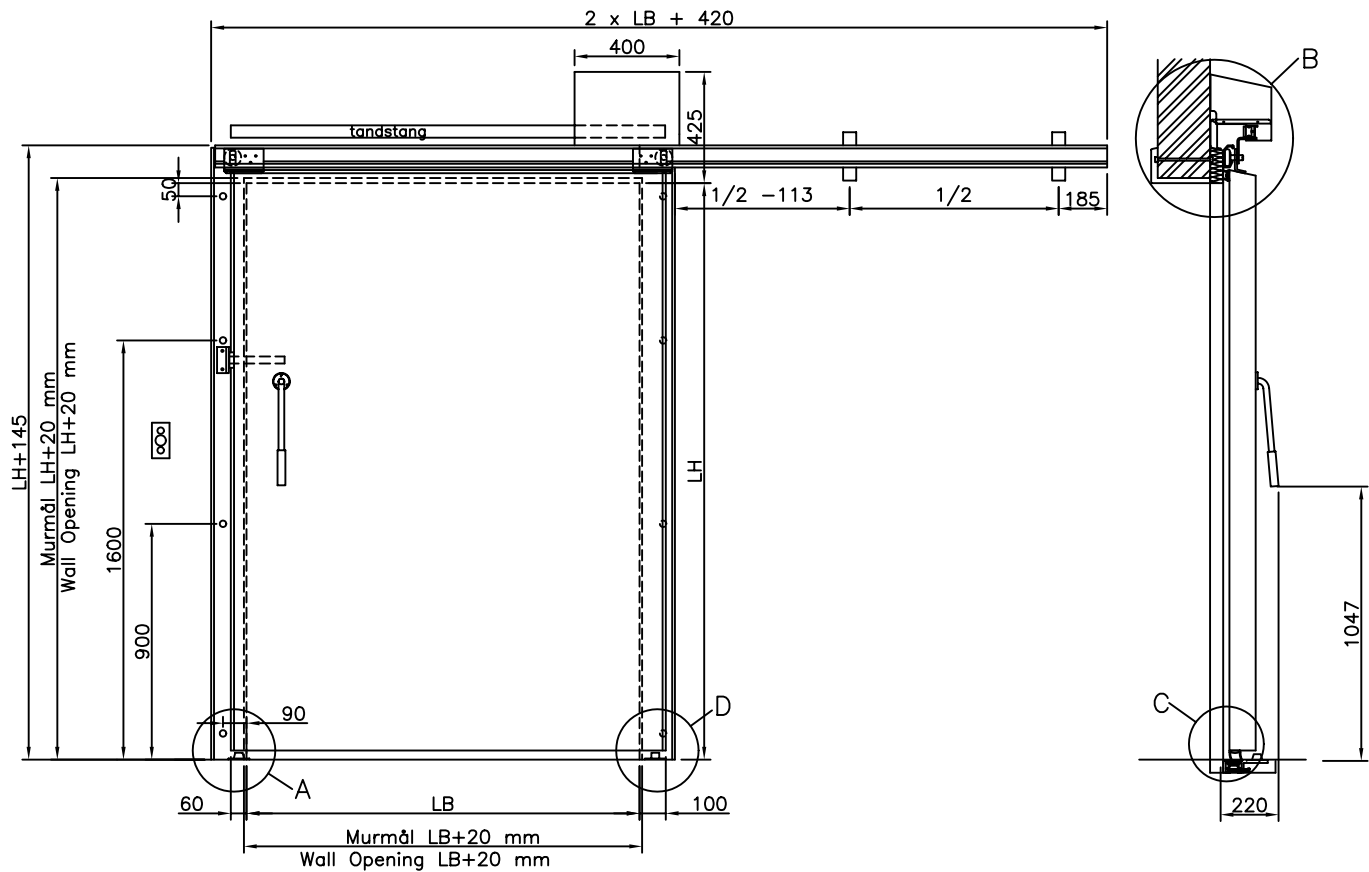
D/1:5



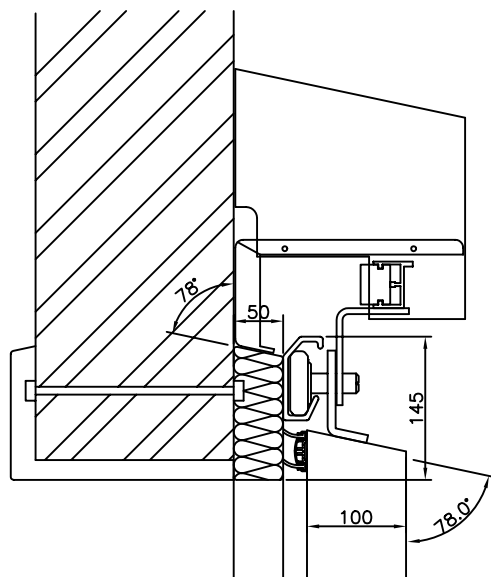
**DOORSYSTEM
Howejen 150
DK-8361 Hasselager**

MANUEL 100 MM SKYDEDØR
1 FLØJET FROST

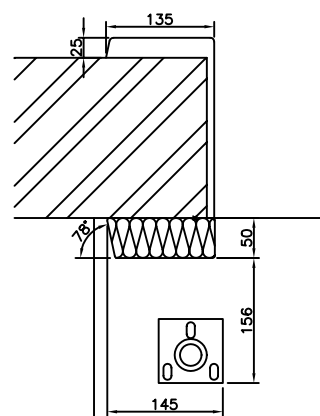
Tegnet af:	CS
Dato:	13-01-99
Godkendt af:	
Dørtype:	MS1001F
Tolerancer iflg. DS 2075 (middel), hvor intet andet er ang.	
Tegningsnummer:	MS1001F
Rev:	A
Ordrenummer:	Dæmr.:
Målforhold:	1:20/A3
Papir:	



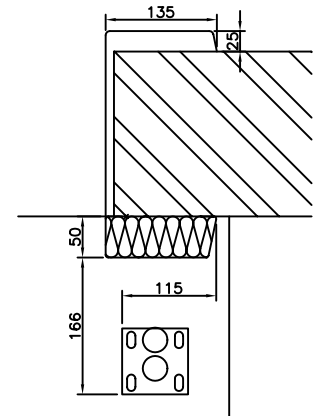
B/1:5



A/1:5



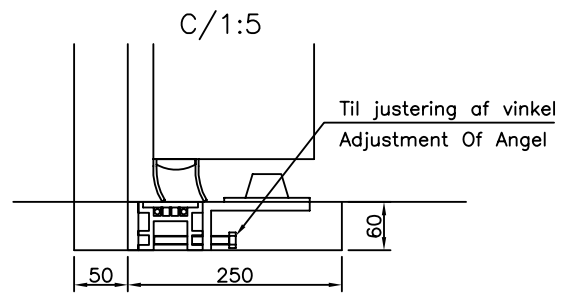
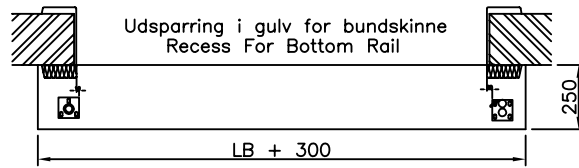
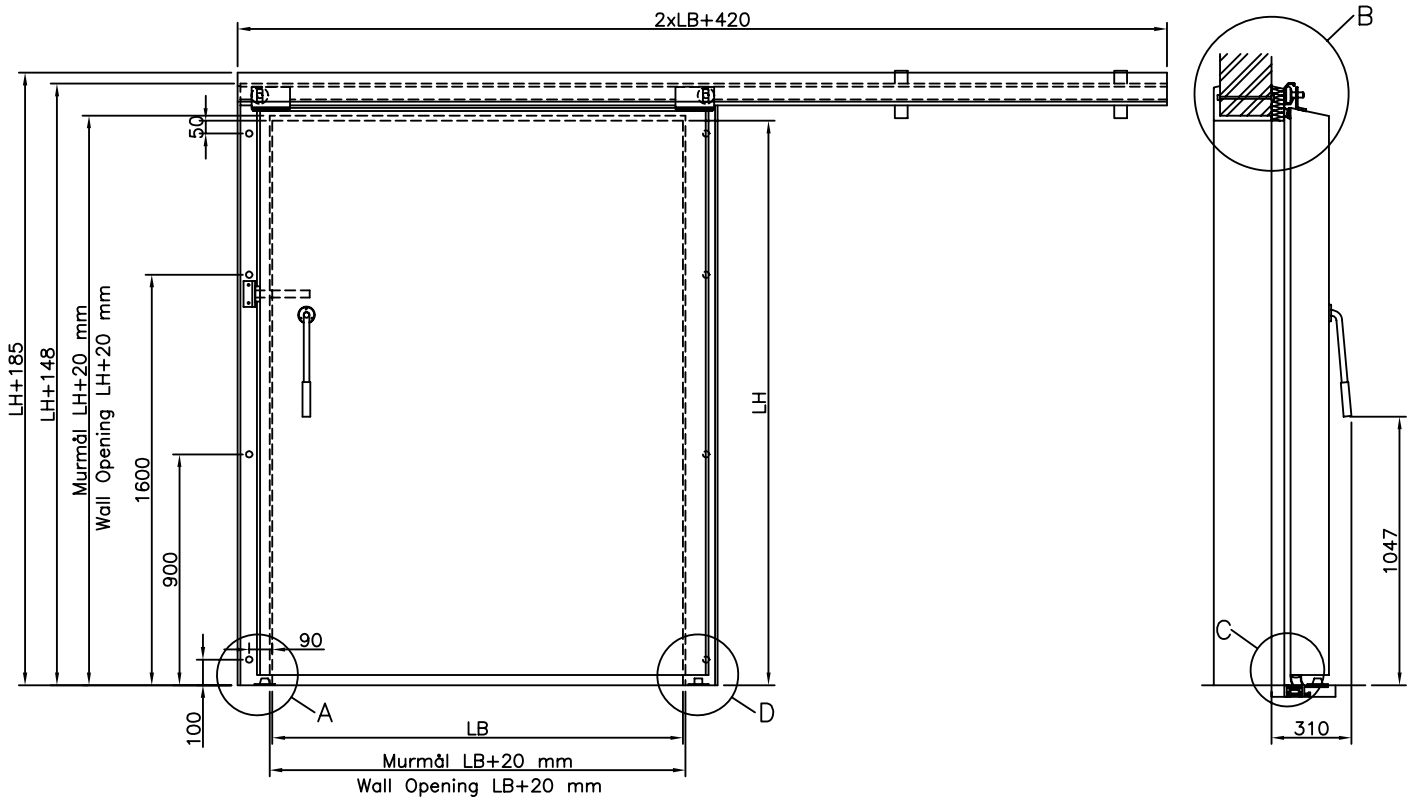
D/1:5



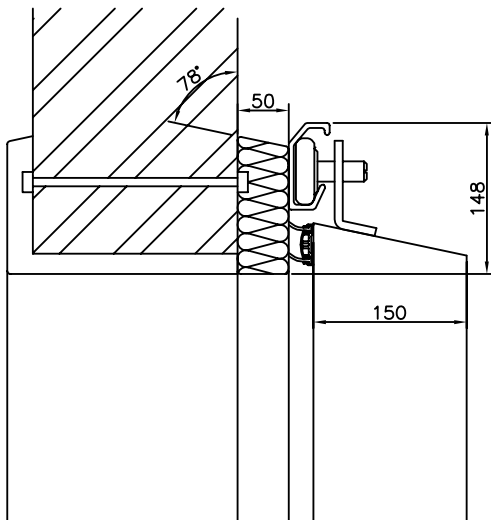
DOORSYSTEM
Hovejen 150
DK-8361 Hasselager

AUTOMATISK 100 MM SKYDEDØR
 1 FLØJET FROST

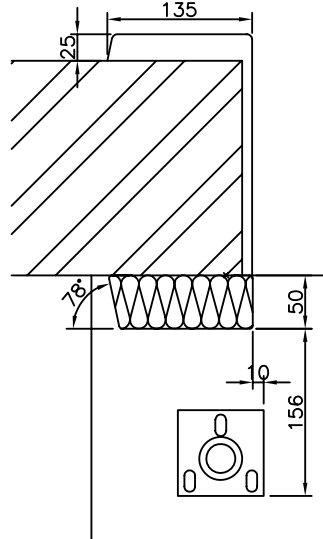
Tegnet af:	HMA
Dato:	22-09-00
Godkendt af:	
Dørtype:	AS1001F
Tolerancer iflg. DS 2075 (middel), hvor intet andet er ang.	
Tegningsnummer:	Rev: AS1001F A
Ordrenummer:	Dænr.:
Målforskel:	1:20/A3
Papir:	



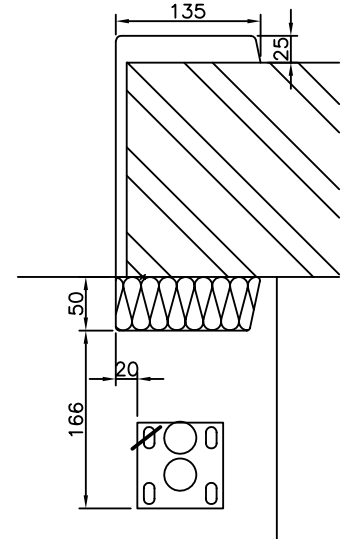
B/1:5



A/1:5

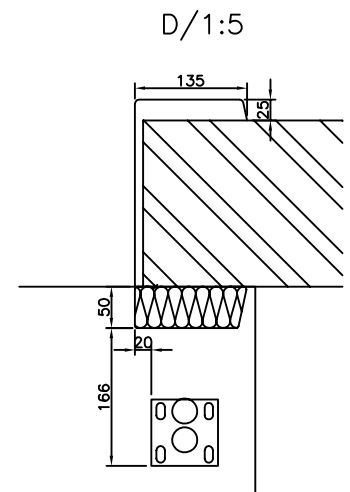
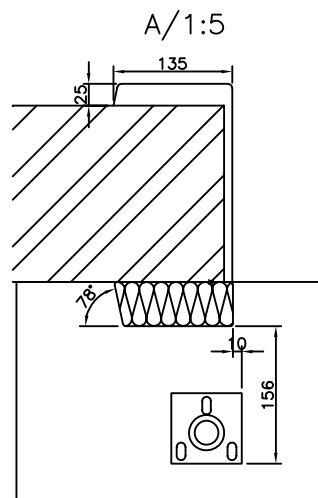
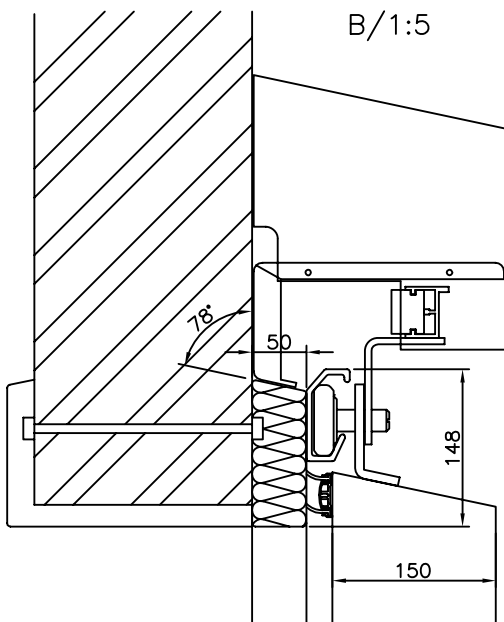
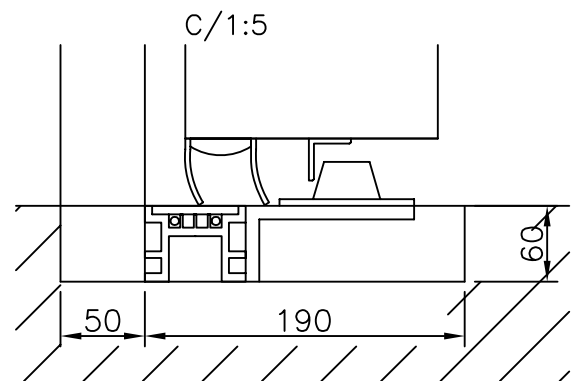
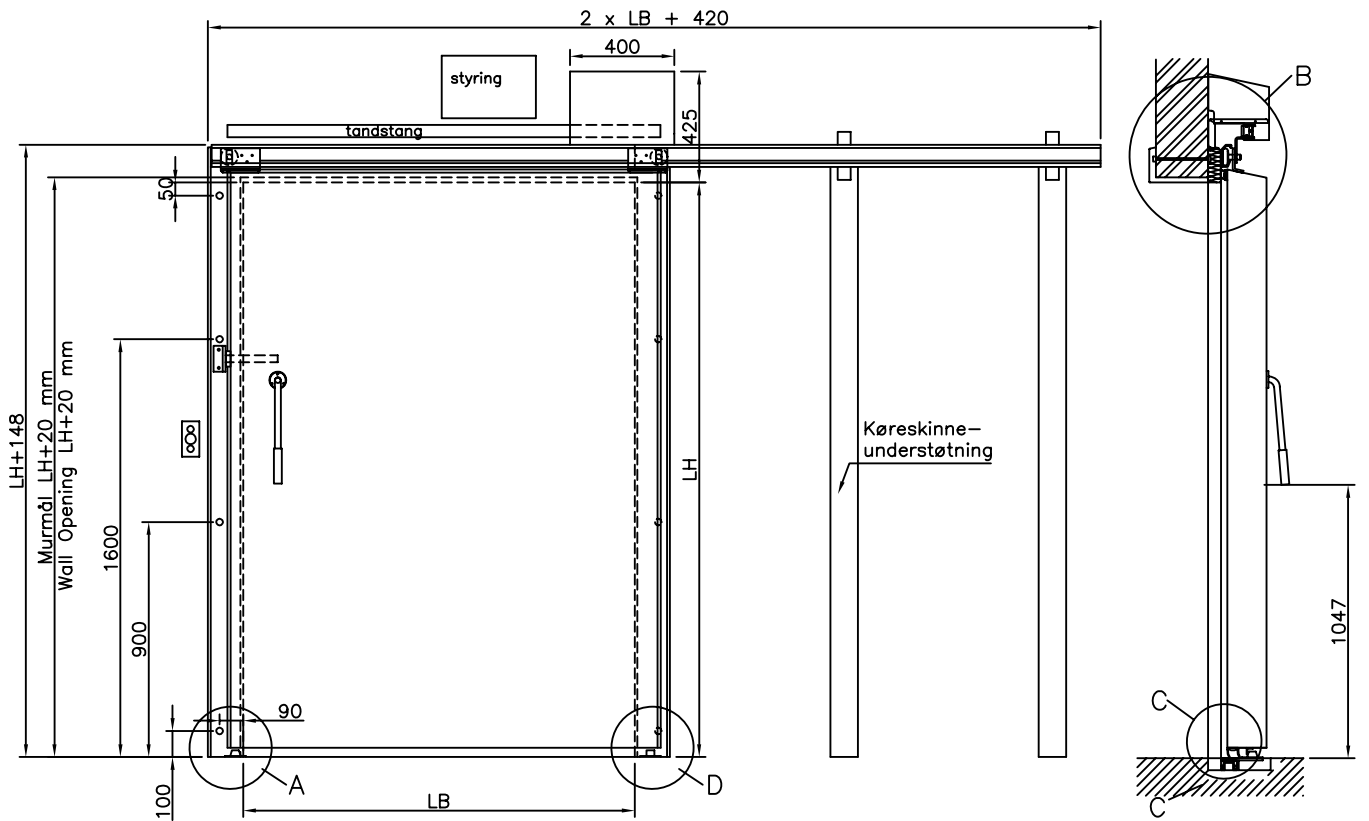


D/1:5



LB = Lysningsbredde
 LH = Lysningshøjde
 LB = Clear Opening Width
 LH = Clear Opening Height

DOORSYSTEM Hovvejen 150 DK-8361 Hasselager		Tegnet af:	HMA
		Dato:	10-09-04
MANUEL 150 MM SKYDEDØR 1 FLØJET FROST		Godkendt af:	
		Dørtype:	MS1501F
		Tolerancer iflg. DS 2075 (middel), hvor intet andet er ang.	
		Tegningsnummer:	MS1501F
		Rev:	B
		Ordrenummer:	Demr.:
		Målforskel:	1:20/A3



DOORSYSTEM
Hovejen 150
DK-8361 Hasselager

AUTOMATISK 150 MM SKYDEDØR
 1 FLØJET FROST

Tegnet af:	HMA
Dato:	21-11-01
Godkendt af:	
Dørtype:	AS1501F
Tolerancer iflg. DS 2075 (middel), hvor intet andet er ang.	
Tegningsnummer:	AS1501F
Rev:	A
Ordrenummer:	Dørrn.:
Målforhold:	1:20/A3
Papir:	