

Sliding doors from Door System are efficient and reliable. Handles and fittings are all "hidden" and dimensioned to withstand collisions, heavy-handed use, high pace and strict hygiene requirements. All risks of pinch injuries are minimized and our doors always comply with the latest safety requirements. We have collected relevant data on our sliding doors below.

Door thicknesses and selection of door

Sliding doors are available both as manual and automatic. The doors are available in different thicknesses: 40, 60, 65, 80, 100 and 150 mm. The doors are available as both 1-leaf and 2-leaves.

Sliding doors for cold store are available in the following thicknesses: 60, 80 and 100 mm.

Sliding doors for freezer rooms are available in the following thicknesses: 100 and 150 mm.

Approved fire doors are available in the following thicknesses: 80 mm (in accordance with DS 1052.2) and 71 mm (in accordance with EN 13501-2).

The doors can also be made as vertical doors (not approved fire doors).

Door sizes

All doors are made according to the customer's request, however at max. size (door leaf): $W \times H = 6.2 \times 4.5$ m (at $W > 3.2$ m the steel plate in the door leaf is divided).

For fire doors, the fire approval is valid up to the following sizes:

Fire doors according to EN 13501-2:
 $W \times H = 5.07 \times 4.89$ m (clear opening).

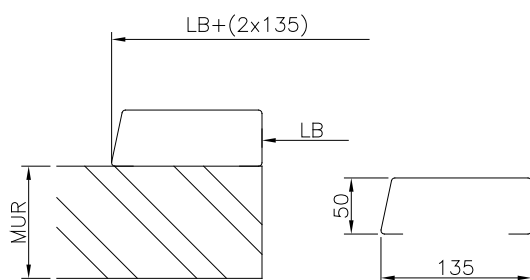
Fire doors according to DS 1052.2:
 $W \times H = 4.8 \times 3.6$ m (wall opening).

Surface Material

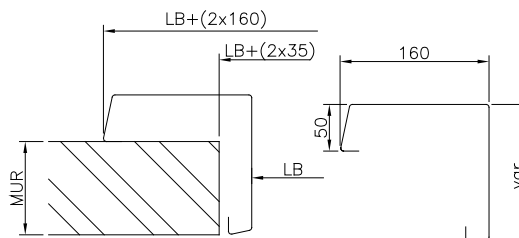
Stainless steel, stainless acid-resistant steel, galvanized steel, lacquered steel in standard RAL color and Food-Safe (available in white, gray and blue)(frames are always made of stainless steel).

Frames

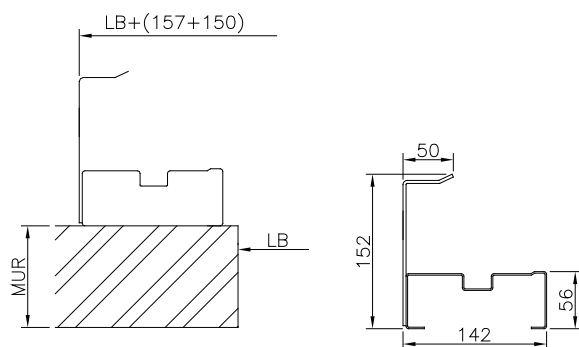
Made of stainless steel. Depth and height of the frames can often be adjusted, but by default the following design:



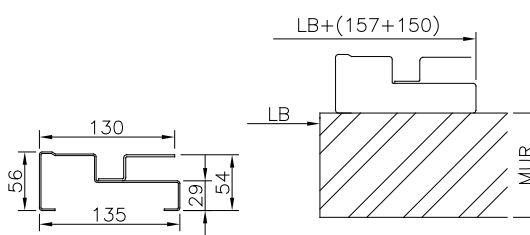
Type A, 40/60/100/150 mm



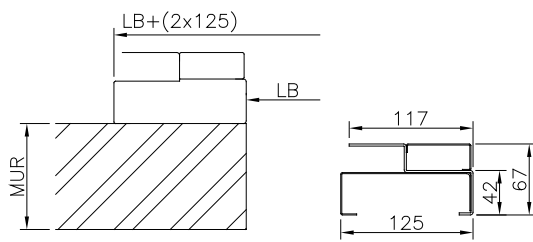
Type J, 40/60/100/150 mm



Type EI₂60 fire (front edge)



Type EI₂60 fire (rear edge)



Type BS60 fire

Sliding rail

Anodized aluminum or stainless steel



Sliding rail

Handles

- Bowl and pull handle
- DS handle
- Edge handle
- Torque handle



DS handle

Accessories

- Automation
- Personnel door³
- Window¹⁺³
- ABDL
- Brake
- Battery Back-up²
- Pull switch²
- Radar²
- Extra safety at the rear edge of the door leaf²
- Frame 4 sides

¹ not possible with fire door according to DS1052.2

² only possible with automatic doors

³ not possible with fire door according to EN13501-2

Further information or a specific offer?

If you need further information or want a specific offer, please contact us by phone +45 86 92 11 71 or send an e-mail to info@doorsystem.dk.