

***MOUNTING
INSTRUCTION
FOR MANUEL
SLIDING DOOR***

MODEL

MS0401 / MS0402

MS0601 / MS0602

MS0652

MS1001 / MS1002

MS1501 / MS1502

Content

The instruction covers.....	3
Content of delivery.....	3
Type of wall/fastening.....	4
Mounting.....	4
Tools for mounting.....	5
Control of wall opening.....	5
Mounting of counter frame (option).....	6
Mounting of frame and guiding rail.....	7
Mounting of bottom rail.....	8
Mounting of door leaf.....	9
Mounting of door leaf, continued.....	10
Sealing of doors.....	11
Heating cables.....	11
Cover to guide rail (option).....	11
Cleaning after mounting.....	11
Documentation.....	11

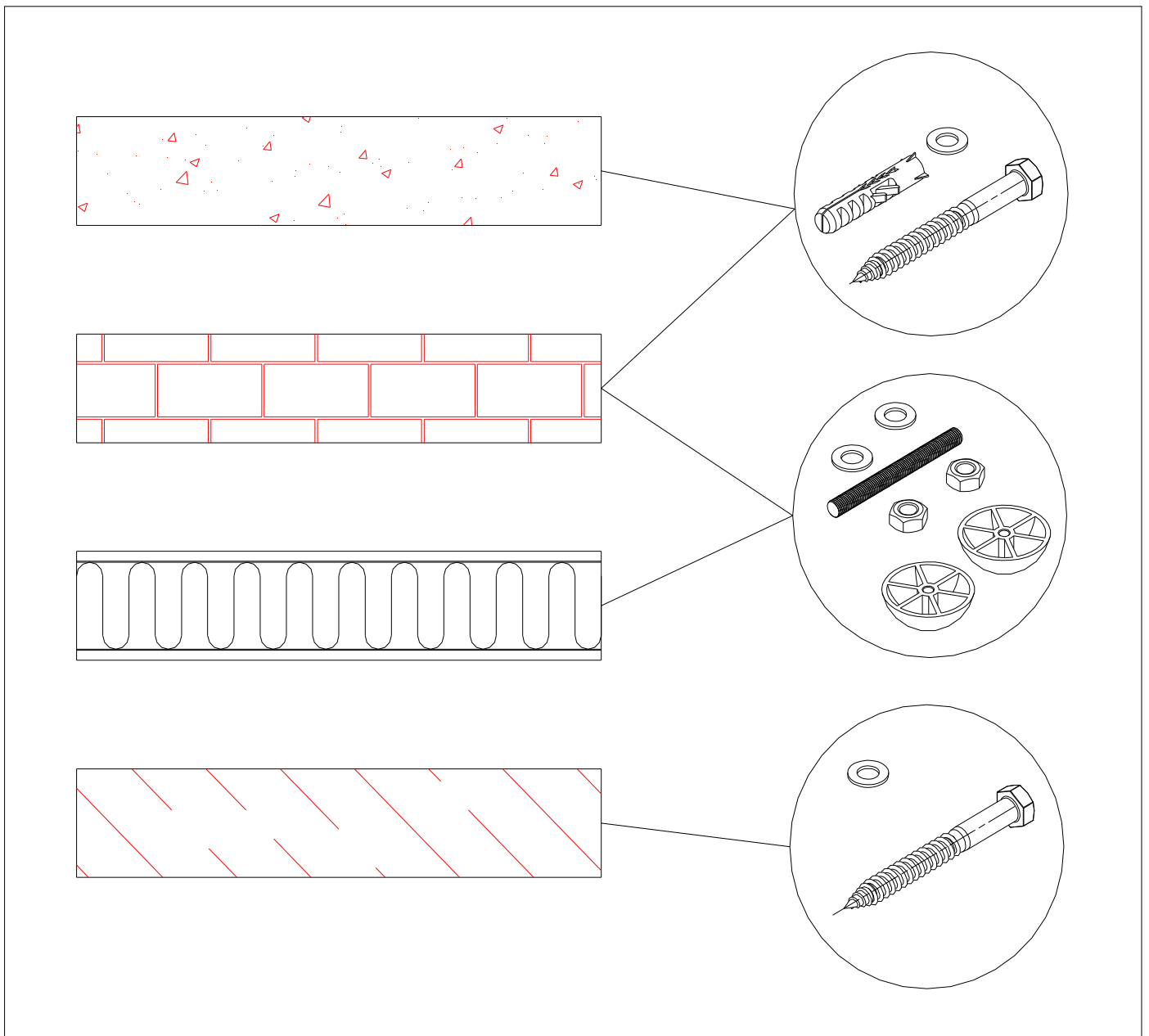
The instruction covers

This instruction covers all variations of the models stated on the front page. A variation contains the model number and following letters and possible numbers. For example, a variation can be (based on the model number MS1001): MS1001K, MS1001F, MS1001FTB etc. Labelled and approved fire doors are not covered by this instruction.

Content of delivery

Description	Comment
Counter frame	Option
Frame with attached sliding rail and connectors Connector for cover attached (option).	
Support for sliding rail	Only for light wall
Sliding rail part B with connectors for cover (option)	
Kit with guide rail for floor, incl. fasteners	
Door leaf prepared with rollers and handles	
Necessary bolts, muster, screws and plugs for installation	

Type of wall/fastening



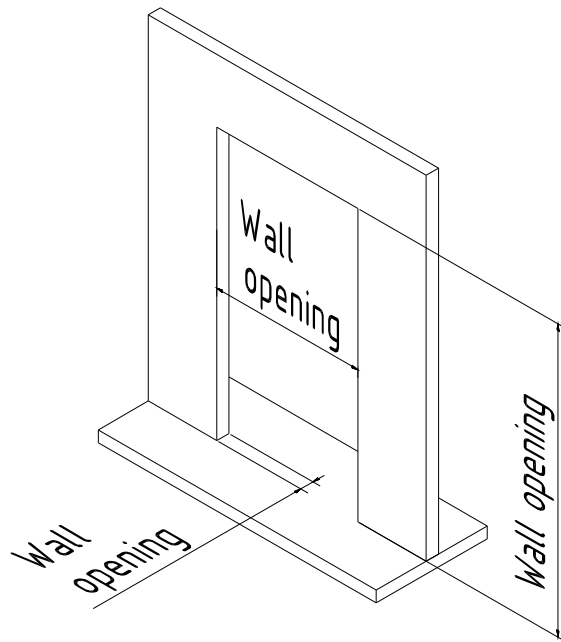
Mounting

Tools for mounting

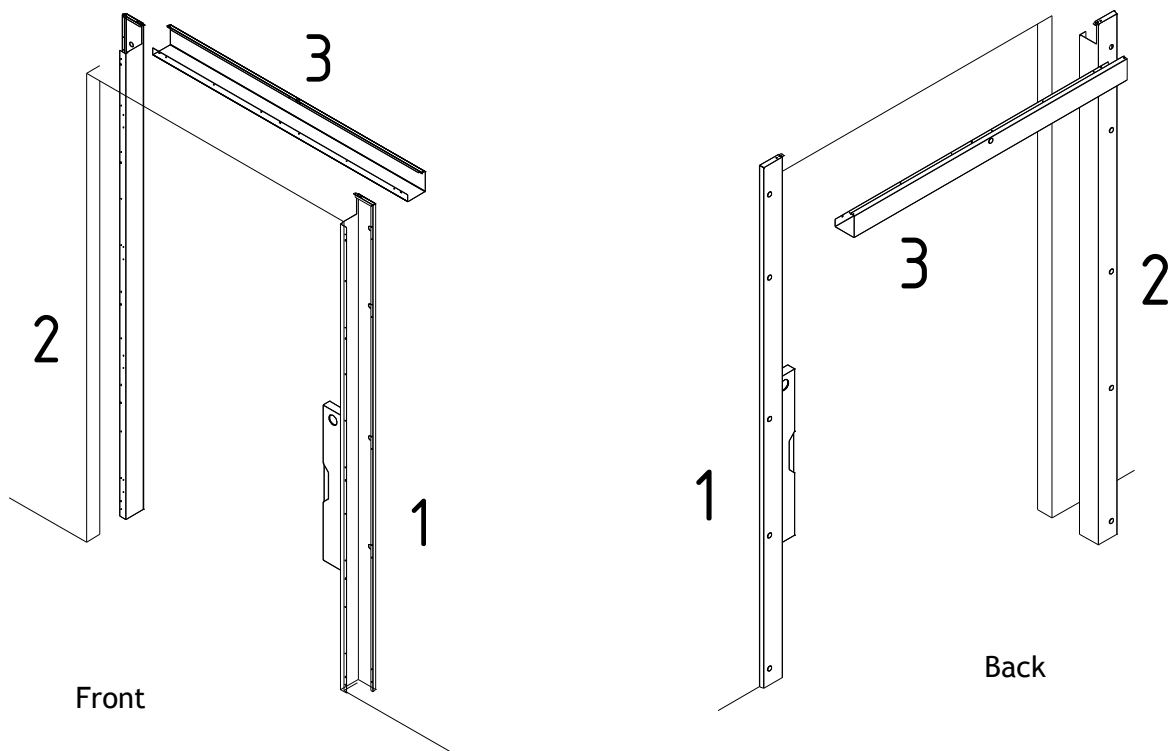
Wedge
Level
Clamps
Power drill/screwdriver/riveter
Bolts/screws/plugs etc.

Control of wall opening

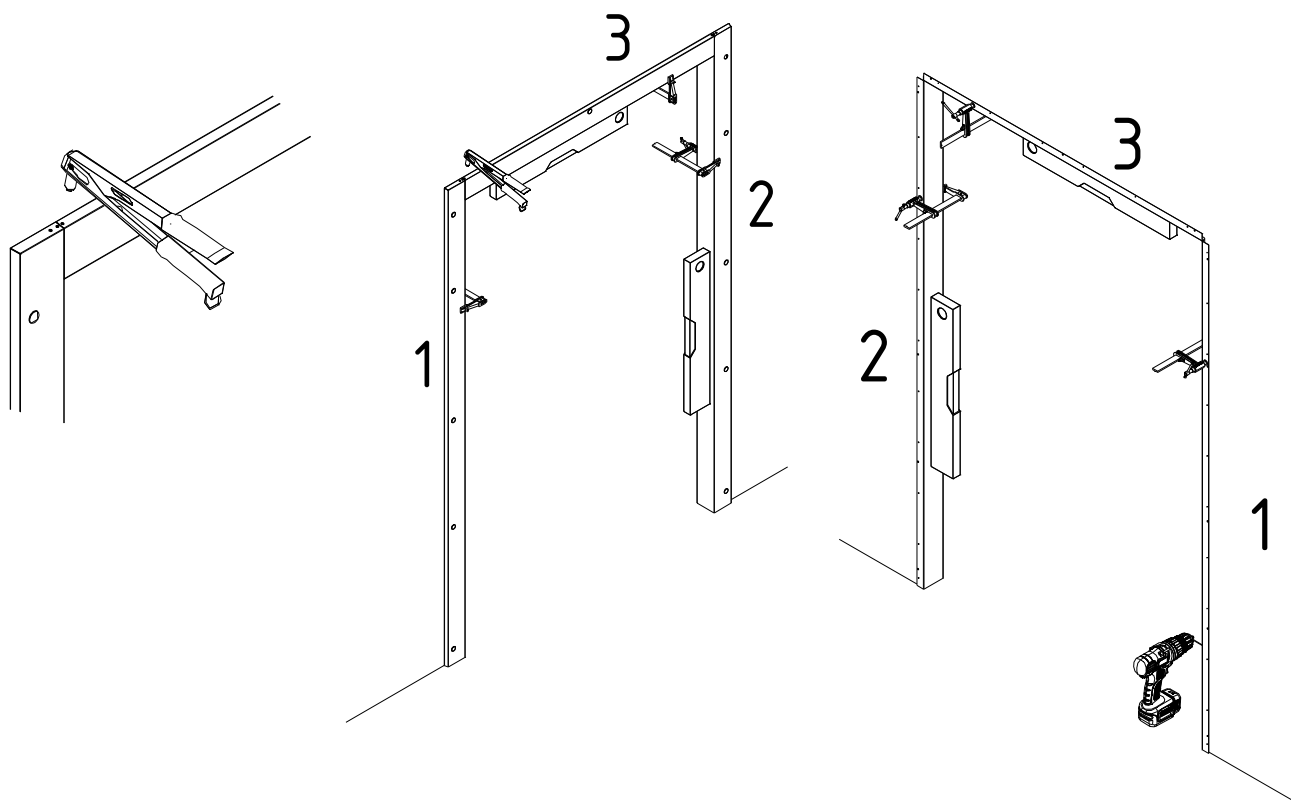
Make sure the wall opening is level and perpendicular and in accordance with the order confirmation.



Mounting of counter frame (option)



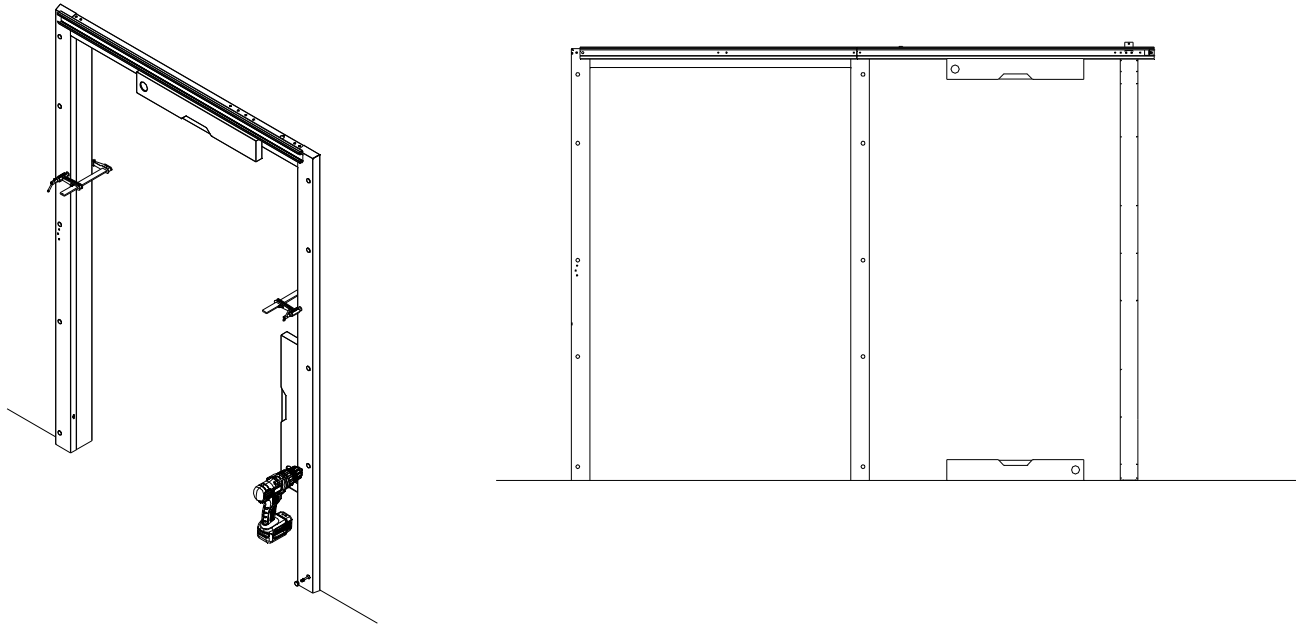
The counter frame is held against the wall with clamps (opposite the side of the wall where the sliding door is to be fitted). Before the final fastening of the counter frame, it has to be checked that the counter frame is in level both horizontal and vertical.



The corners of the counter frame are fastened with pop rivets. The counter frame is prepared with mounting holes and underlying mounting connectors where the counter frame has to be fastened. Drill holes through the mounting holes and fasten the counter frame with the supplied fasteners.

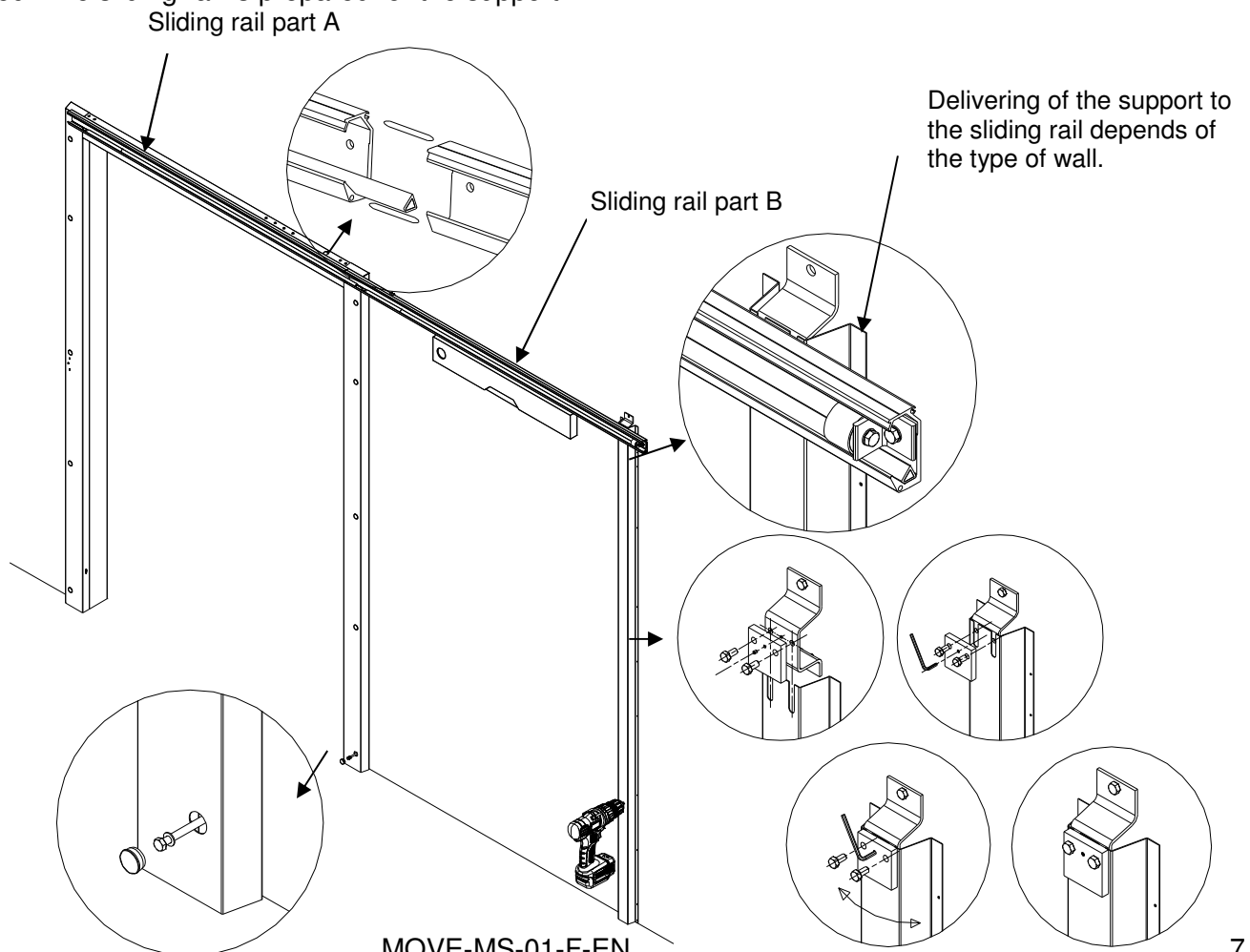
Mounting of frame and sliding rail

Optionally counter frame has to be installed before the frame.



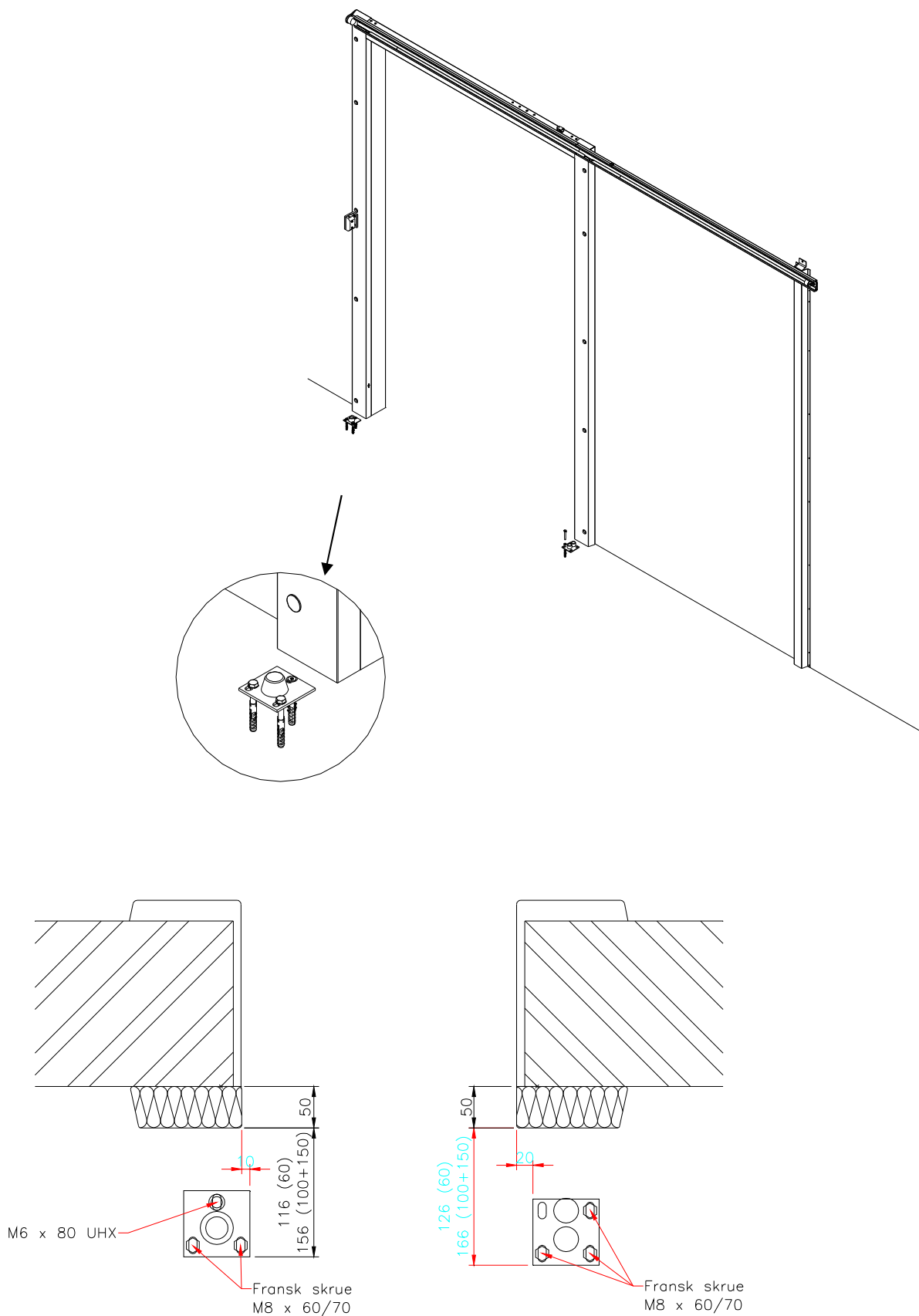
The frame is prepared with mounting holes and underlying mounting connectors where the counter frame has to be fastened. Drill holes through the mounting holes and fasten the frame with the supplied fasteners. Before the fastening it has to be checked if the frame is in level both horizontal and vertical.

Sliding rail part A is fastened to the frame at delivery. Sliding rail part B is pushed together with part A and fastened to the wall with the supplied connectors. If the wall is a light wall, supports for the sliding rail is delivered. The sliding rail is prepared for the support.



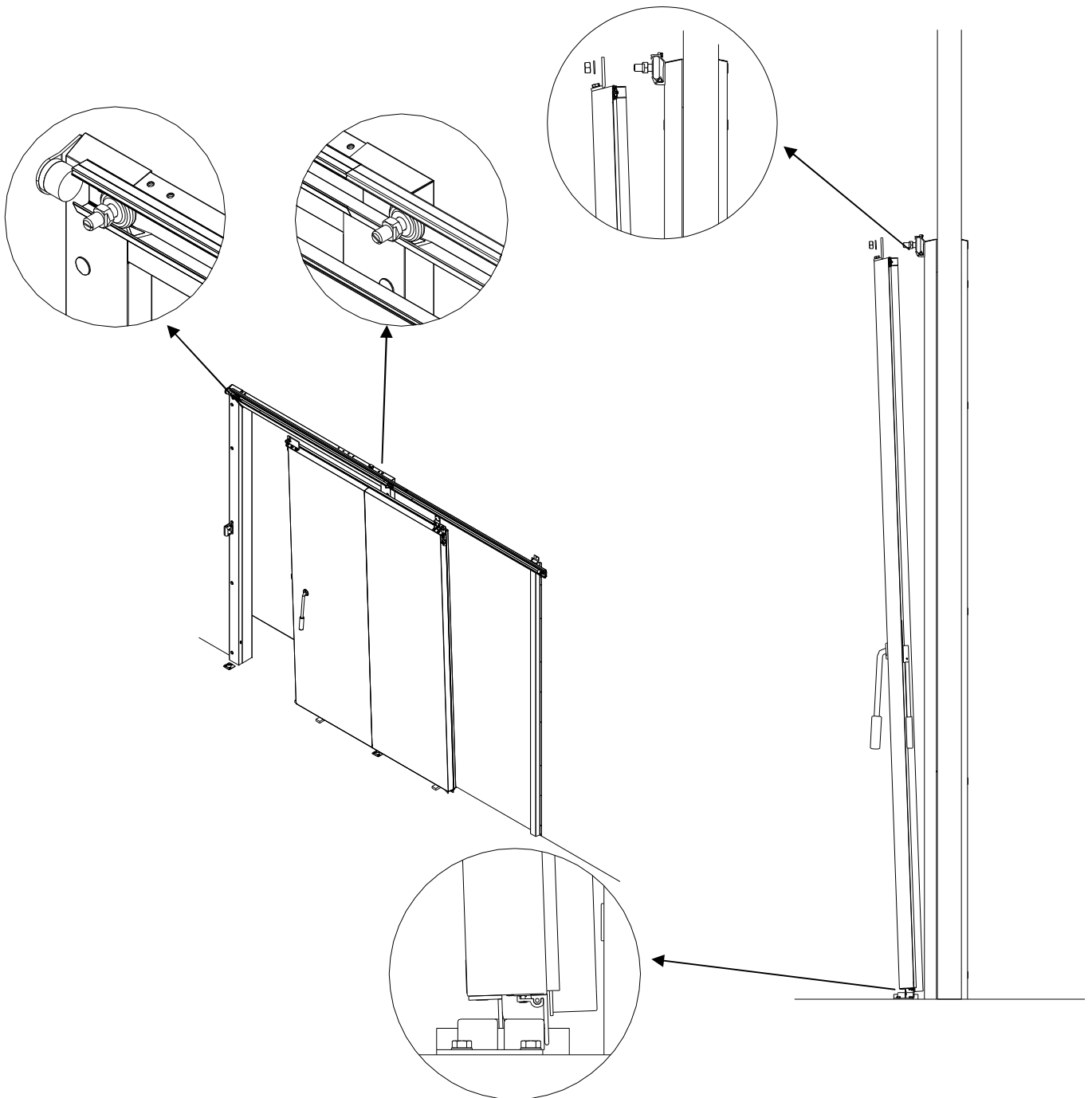
Mounting of guiding rail

Guiding rail can be mounted before mounting of the door leaf according to the below measurements (or after mounting of the door leaf). The frame always has to be mounted before the guiding rail is mounted.



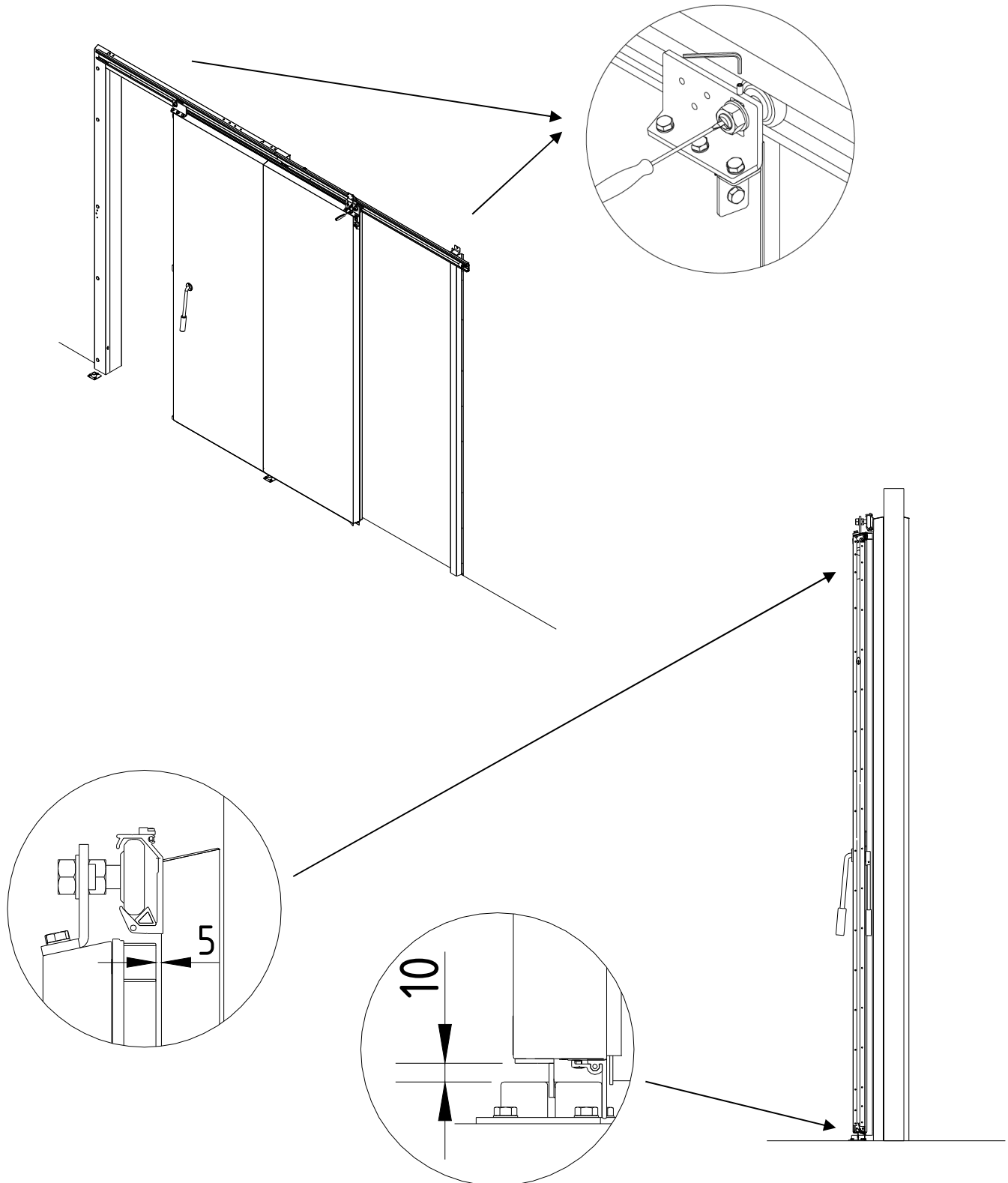
Mounting of door leaf

If the guide rail is mounted, the bottom rail on the door leaf has to be placed in the guiding rail and the door leaf is tipped into place. The holes in the attached angle connectors at the top of the door leaf has to fit onto the pin bolts of the roller. The connectors and rollers are fastened with supplied washers and nuts.



Mounting of door leaf, continued

The door leaf is adjusted so the sealing are tight and the door leaf can easily open and close (be aware that the sealing may not be squeezed flat and sweep against the floor). The door leaf has to be closed when it is adjusted. By turning the pin bolt on the roller with a screwdriver, the door leaf can be adjusted horizontally. By turning a 6 mm socket screw at the top of the angle connector, the height of the door leaf can be adjusted.



Sealing of doors

The gab between frame and wall is sealed with adhesive.

Heating cables

Heating cables in frames for freezers is connected to 230V/50Hz.

Heating cables in the door leaf is placed in the supplied tubes to the end of the guiding rail, where they are connected to power supply 230V/50Hz.

Cover to guide rail (option)

The supplied stainless connectors are slid into slots on top of the guide rail. The cover for the guide rail is placed on top of the connectors and pushed towards the frame. The cover is fastened to the connectors with screws and the gab between the cover and frame is sealed with adhesive.

Cleaning after mounting

- Make sure the frame and the bottom rail are clean and all concrete, adhesive or other materials are removed (acid may not be used on the steel surface).
- Make sure the door easily can open and close and there is no obstacles for the use of the door.
- Make sure the door can open without the sealing sweeps against the floor.
- When the door is closed, the sweeper gasket shall touch the floor and the gaskets in the sides and on the top of the door shall touch the frame.
(The gaskets may not be squeezed flat as that will reduce their lifetime).
- Remove the foil from frame and door.
- Rollers have to be retighten
- The guide rail should be greased with grease where the rollers are placed in closed position.
- Oil all stainless surfaces with oil for stainless steel and intended for use in the environment where the door is mounted.
- Make sure that e.g. hinges, handles and locks are all greased with grease.

Documentation

Make sure the label is attached to the door.

Make sure the following documentation is supplied with the door:

- EF declaration of performance (if the door is CE-marked)
- Operation – and maintenance manual